

Year 2000 AD Final Report
For Global Instruments LTD
Comparative Field Site Observations

Prepared by H. Shytel Glover,
Operational Researcher and Consultant of Integrated Pest Management (IPM)
Issue Pest Management (IPM)
And Electronic Pest Control Devices

(sample of net presence website or e-commerce site:
<http://www.commercemarketplace.com/> then search for HPM, then click in)

For IM consultation marketing e-mail: shytel@juno.com

This is a comparative Study of Traps
Vs. Electronic Pest Control On Rodent Mice, Rats and Roaches

(602) 298-5410 or page (602) 662-3205

CONTENTS

- I. INTRODUCTION
- II. TEST SITE OBSERVATIONS &
MONITORING
- III. TESTING PROTOCOL
- IV. MONITORING SHEETS & GRAPHS
- V. SUMMARY & CONSLUSIONS

I.

INTRODUCTION

“We are standing at the threshold of a new century, a century that promises to be as revolutionary in the technology that affects our daily lives and the future of our country as the inventions that so profoundly shaped the past 100 years.”

—UNITED STATES FEDERAL COMMUNICATIONS COMMISSION—

As a researcher with over ten years of revolutionary Integrated Pest Management (a.k.a. IPM, the Internationally Recognized New Millennium State of the Art Safe, Effective Pest Control Invention, whose roots are traced to Indigenous Aborigines, Modern Canada, the United States and Great Britain) and the testing of 21st Century Revolutionary Electronic Pest Control (EPC) devices, I H. Shytel Glover accept this final testing assignment from Global Instruments LTD..

I have been asked by Global Instruments LTD to test their electromagnetic pest repellent device in comparison to sites that will not have the repellent device. The traps used at the field test sites are used to count captured rodents, mice and roaches. International testing protocol for such a test in the year 2000 takes into account that Global's EPC pulse technology NEW SO-CALLED PESTICIDE repellent device must drive pest out from hiding and is not designed to kill rodents or roaches, although it works like a pesticide for international governments as well as the EPA. The word pesticide means “Killer of pest that cause plagues as the rat.” As of this writing the EPA also defines Global's EPC Device as a so-called pesticide because it alters the non-toxic electromagnetic field present around all wiring so that it disrupts the nervous system of rodents and insect pest as do chemical pesticides.

There are New Millennium definitions for safer alternative environmental pesticide according to the EPA. Global's Electric so-called pesticide is NON TOXIC and unlike Chemical pesticides. Chemical pesticides are attributed to causing many old and new environmental illnesses. There is a call for safe pest control that doesn't cause disease. Perhaps this report will point out in its conclusion that because disease carrying rodents and roaches “are” repelled by Global's EPC device, the costly need of traps for consumers may be cut in half or eliminated due to the repellent so-called pesticide factor of the EPC device!

At this time, Internationally, the earth is growing hotter due to global warming. With the warming of the planet, comes an increased rodent and roach population as sure as the sun shines. Chemical poison food die backs used to poison roaches with the increase of global warming have been made twice as deadly than they were 15 years ago, according to the inventor of COMBAT. Roach die backs use can cost \$50 a year. Gluetraps seem not to be as effective with rodents because rodents are smart!

Glueboard/traps for roaches have been known to cost consumers in Arizona over \$200 per month! That alone can equal \$2,400 annually as I have personally witnessed!

This report will attempt to show in six weeks that Global's device as a pesticide repellent sends both rodent and roaches packing due to the repellent factor. Both rodent and roach after six weeks should prove that this EPC not only lowers the need of traps, but can in certain cases eliminate their use in controlling pest.

In my opinion, the comparative testing of Globals EPC repellent device vs. traps must accomplish the following:

1. Rodents behavior must change due to the EPC repellent device; they must be brought out of hiding into the testing areas due to neurological disruption.
2. Roaches behavior must change due to the EPC repellent device; they must be brought out of hiding into the testing areas due to neurological disruption.
3. Rodents must be trapped onto glueboards/traps for counting and disposal.
4. Roaches must be trapped onto glueboards/traps for counting and disposal.
5. Both rodent and roach must become so effected by the EPC repellent devise that they become trapped on glueboards or leave the premises.
6. Conclude if the EPA's definition of the word pesticide EPC as a so-called pesticide fits Global's device.

The results of these test sites are presented herein as actual qualitative observations by the participants and H. Shytel Glover, although participants wish their names and address to remain anonymous to the public.

II

TEST SITE OBSERVATIONS & MONITORING

Pre-Inspection of rat, field mice and roach test sites for Global Instruments.

Starting date to check field sites: June 12, 2000 AD
Time in 9am, Time out 7pm.

TEST SITES:

LOCATION OF PARTICIPANTS IN PHOENIX, ARIZONA

On Monday June 12, 2000 AD, I arrived at the addresses below:

1.
4440 S. 20th Street, Phoenix AZ., 85040, a four bedroom house in south Phoenix. There were visible signs of rodents such as rodent feces in the kitchen and children's bedroom. Homeowner said rodents has a backyard that rats and field mice live in. 2500 sq. ft.
2.
3239 W. Mescel Street, Phoenix, AZ. 85029, a two bedroom house in north Phoenix. Visible signs of rodent droppings in storage room in back of house and in kitchen 1200 sq. ft.
3.
4825 S. 21st Street, Phoenix, AZ. 85040 This is a 8 room house with rats and field mice. This house has rodent droppings and property damage says new homeowner. 4500 sq. ft.
4.
2950 W. 71st Drive, Phoenix, AZ. 85033. This three bedroom home has mouse droppings in kitchen, and bedrooms. Roaches also present throughout house. 1600 sq. ft.
5.
3741 W. Hazelwood, Phoenix, AZ 85019. This is a three bedroom house with rat and mouse feces in kitchen and backdoor. Mouse leaves a trail which will be discovered with tracking powder. 1700 sq. ft.
6.
4145 N. 55th Avenue, #203, Phoenix, AZ. 85031. This is a two bedroom apartment with roach and rodent droppings under kitchen sink and through apartment. 1300 sq. ft.
7.
3130 E. Roeser Rd., #6, Phoenix, AZ. 85040. A one bedroom apartment. Rodent droppings primarily in kitchen and dinning area. 1100 sq. ft.
8.
1610 W. Lawrence Road, Phoenix, AZ 85015. A four bedroom home with rodent droppings and roaches present. 2700 sq. ft.
- 9.

2816 W. Sahuro Dr. # 29-206, Phoenix, Arizona 85029. A three bedroom apartment with roaches present. No sign of rodents. 1600sq. ft..

10.

826 W. Hononegh Dr., Phoenix Arizona 85027. A five bedroom home with rodent and roach feces present. 2000 sq. ft..

11.

2830 W. Sahuro Phoenix Arizona 85029 A four bedroom home. Signs of property damage by rodents. Roaches are also present. 2000 sq. feet.

12.

4337 N. 53rd Lane, # 156, Phoenix, AZ. 85031. A one bedroom apartment with roaches present. 1000 sq. ft..

13.

2133 W Turney, # 73A, Phoenix, AZ. 85015. A two bedroom apartment with roaches. No signs of rodents present. 1175 sq. ft..

14.

2443 E. Broadway Rd., Phoenix AZ 85040. A three bedroom apartment with rodent and roaches present. 1400 sq. ft..

15.

3310 W. Glenrosa Avenue, Phoenix, Az. 85017. A three bedroom house with roaches present. 1500 sq. ft..

LOCATION OF PATICIPANTS IN SCOTTSDALE, ARIZONA

16.

8180 E. Shea Blvd. # unit 1077, Scottsdale, Arizona 85200. A one bedroom condominium luxury apartment/home. Roaches present. 2500 sq. ft..

17.

8210 E. Hoverland, Scottsdale, Arizona 85255. Three bedroom house with rodents present. 2300 sq. ft.

18.

9261 E. Raintree, Building 1, Scottsdale, Arizona 85260. This is a two bedroom apartment with roaches only. 1300 sq. ft..

19.

1228 N. 75th Avenue, Scottsdale, Arizona 85257. This is a two bedroom townhouse with roaches only. 1200 sq. ft..

20.

1226 N. 75th Avenue, Scottsdale, Arizona 85257. This is a two bedroom townhouse with sewer roaches and German roaches. 1200 sq. ft.

21.

6350 N. 78th Street, #unit 313 Scottsdale, Arizona 85250. This three bedroom townhouse has German and sewer roaches. 1800 sq. ft..

22.

6350 N. 78th Street, #unit 315 Scottsdale, Arizona 85050. This three bedroom townhouse has German and sewer roaches. 1800 sq. ft..

III TESTING PROTOCOL

Twenty two (22) field sites are made available for the comparative testing of Global's EPC device VS. Traps but no EPC device.

The 22 field sites are to be monitored for one (1) week using tracking powder and glueboard/traps. The objective of this testing is to clear up any doubts as to the presents of rodents, roaches and the effectiveness of Global's EPC device in comparison to no device. Testing will begin on Mondays and end on Saturdays.

After the first week of monitoring, the second week will begin with the 22 field sites being divided in half (1/2). Eleven sites will be tested for roaches/rodents **without** the Electronic Pest Control repellent device as a pesticide and eleven sites will be tested for rodents and roaches **with** the EPC repellent device.

Eleven (11) sites will reflect tracking powder and traps for roaches and rodents **without** Global's EPC device for roaches. These sites are 9, 12, 13 and 15 through 22.

Eleven (11) sites will reflect tracking powder and traps for rodents **with** Global's EPC device for rodents and roaches. These sites are 1 through 8, 10, 11 and 14.

Hopefully one of the 22 sites will reflect claims made by Global for rodents and roaches.

At the end of six weeks we will compare traps without device vs. the EPC device. Each site will also reflect the level of rodent and roach infestation.

Roaches and rodent count with device
1 through 8, 10, 11 and 14

Roaches and rodent count without device
9, 12, 13 and 15 through 22

NO DEVICE ANYWHERE

	Roach	Rodent	Roach	Rodent
6/13/00	389	8	353	4
6/14/00	597	7	538	7
6/15/00	366	5	333	3
6/16/00	376	4	357	8
6/17/00	334	6	340	3
6/18/00	Sunday	no count	Sunday	

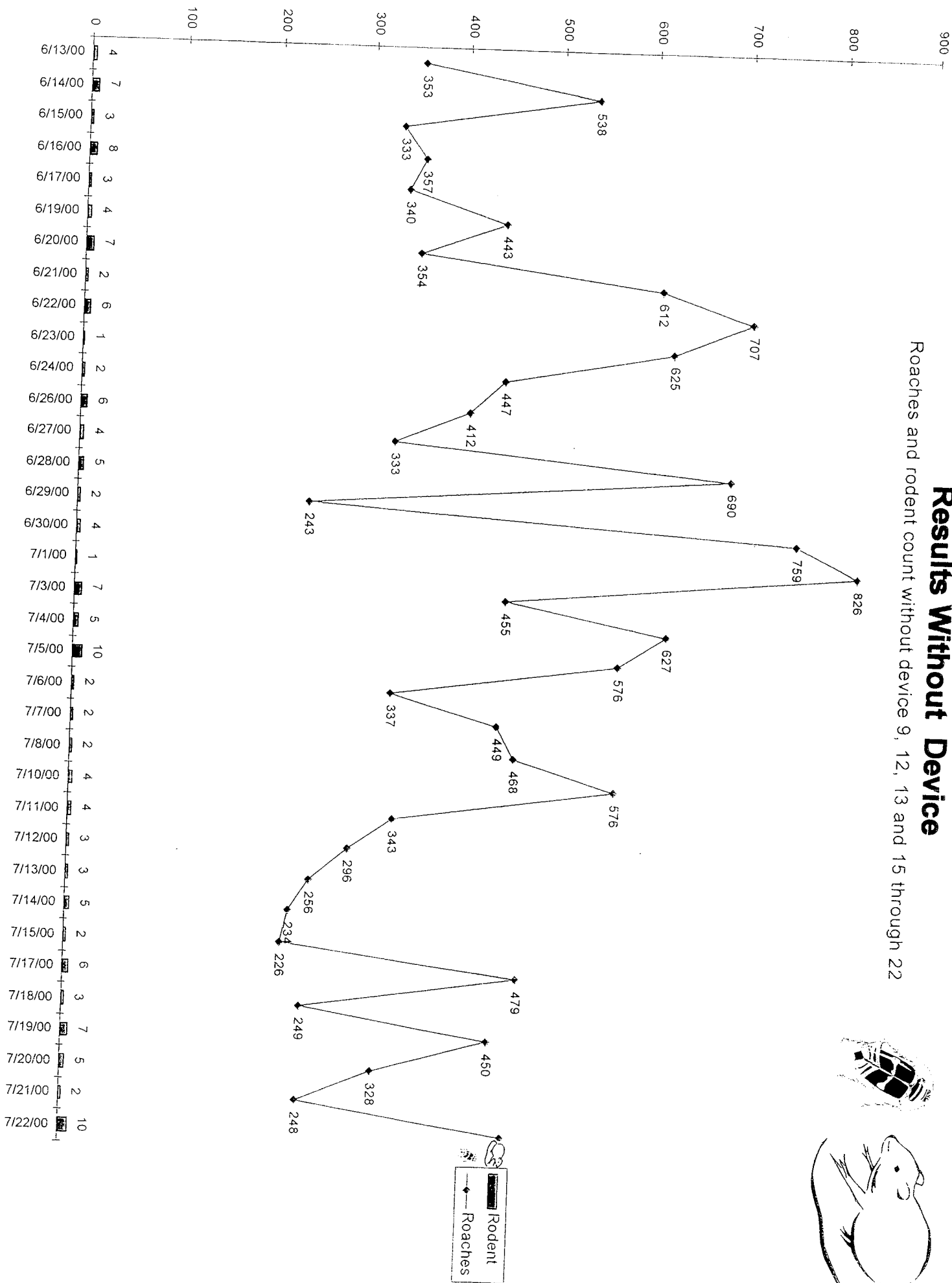
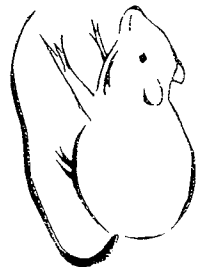
Device installed on Monday in 1 through 8, 10, 11 and 14 only for the test period.



6/19/00	819	8	443	4
6/20/00	534	16	354	7
6/21/00	356	29	612	2
6/22/00	626	11	707	6
6/23/00	425	5	625	1
6/24/00	814	2	447	2
6/25/00	Sunday	no count	Sunday	
6/26/00	722	1	412	6
6/27/00	205	0	333	4
6/28/00	243	2	690	5
6/29/00	319	0	243	2
6/30/00	200	0	759	4
7/1/00	87	0	826	1
7/2/00	Sunday	no count	Sunday	
7/3/00	244	1	455	7
7/4/00	98	0	627	5

7/5/00	143	1	576	10
7/6/00	118	6	337	2
7/7/00	70	0	449	2
7/8/00	17	0	468	2
7/9/00	Sunday			
7/10/00	33	0	576	4
7/11/00	27	0	343	4
7/12/00	17	0	296	3
7/13/00	14	0	256	3
7/14/00	0	0	234	5
7/15/00	0	0	226	2
7/16/00	SUNDAY			
7/17/00	0	0	479	6
7/18/00	0	0	249	3
7/19/00	0	0	450	7
7/20/00	0	0	328	5
7/21/00	0	0	248	2
7/22/00	0	0	467	10

Results Without Device

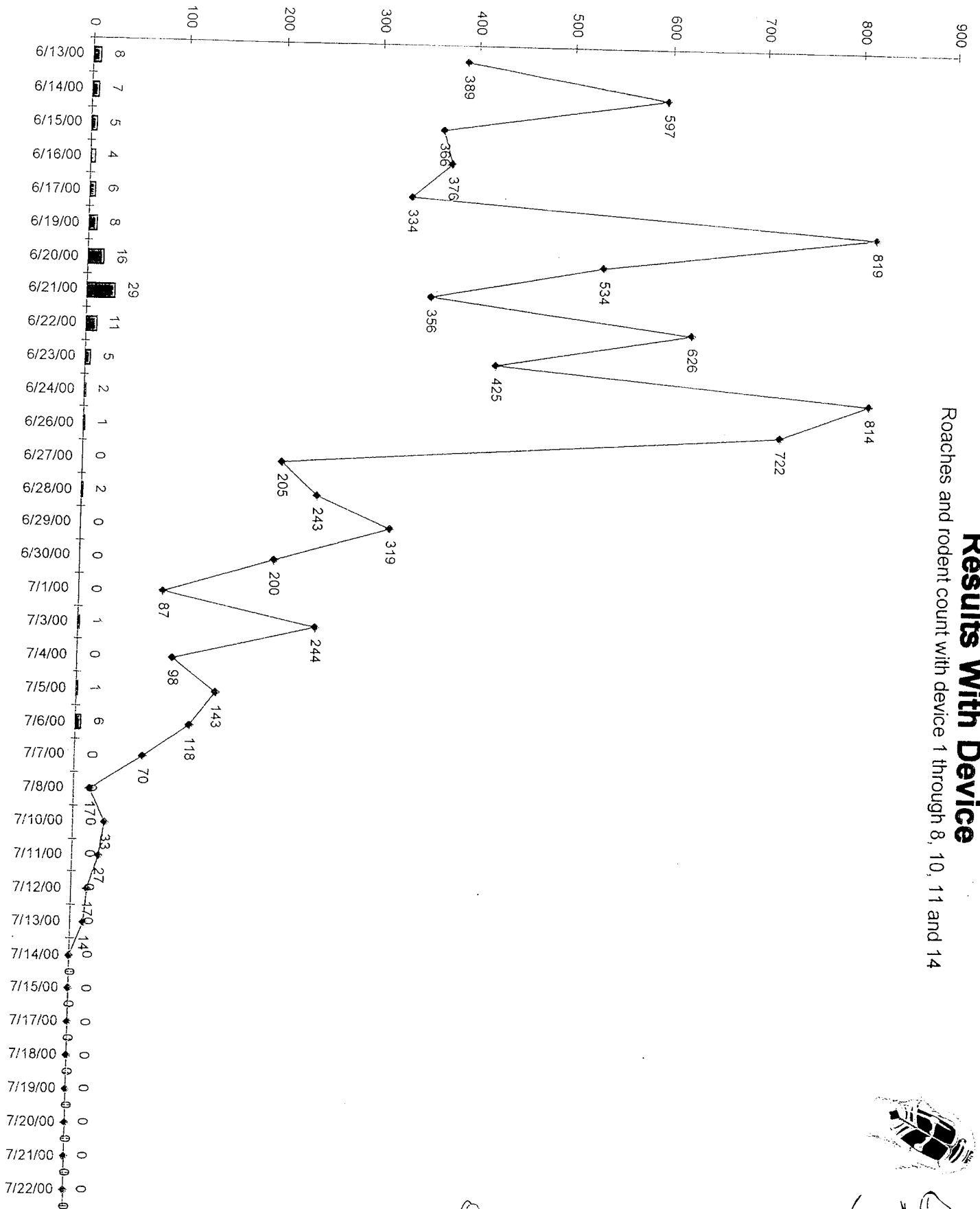
Roaches and rodent count without device 9, 12, 13 and 15 through 22





 Rodent
 Roaches

Results With Device

Roaches and rodent count with device 1 through 8, 10, 11 and 14



 Rodent
 Roaches

V SUMMARY AND CONCLUSION

*Sites during test with Global's EPC Devices are 1 through 8, 10, 11 and 14.
Sites during test without device are 9, 12, 13, and 15 through 22.*

SUMMARY

Test sites 9, 12, 13 and 15 through 22 are the sites that **did not** have the EPC device. These sites with glue/board traps and tracking powder proved through the test that rodents were present due to daily rodent tracks in the smoothed powder, and the daily counts showing captured rodents. At none of these sites however where any new born mice captured. These sites also caught roaches, but didn't end the infestation of roaches or rodents. Rodents seen displayed typical rodent behavior. Hiding, darting from room to room, leaving oil stains along the baseboards. Also leaving feces. Roaches trapped in glue until the end of this test were all adults. No nymphs were captured at all. Nor did the adult roaches or rodents fear daylight

Test sites 1 through 8, 10, 11, and are the test sites that **DID have GIL's EPC device**. Rodent behavior did change at each site where the EPC device was placed. No more hiding, no more typical darting from room to room. Adult and infant rodents were captured at these sites! Rodent and roach infestation came to an end as the count clearly shows. Rodents at these sites came out into the open disoriented, as if *intoxicated*. Having bad eye sight, didn't help rodents because they in their intoxicated state, they just seem to go right into the glue/boards without any caution at all.

They no longer found each site the perfect place to live, hide or visit. Adult and nymph roach counts after July 5th, 2000 proved to this researcher that there would be no nesting in these sites. Roaches after July 5th, 2000 seemed disoriented, staggering as they too were *intoxicated*. Both rodent and roach seemed disoriented. Disorientation is a clear sign of neurological disruption in both rodents and roaches! The count clearly shows that this Electromagnetic Pest Control device works as a **NONTOXIC PESTICIDE** to humans because the **National Institute of Environmental Health of the United States reported after six years of accelerated, Congressionally mandated research says:**

The NIEH believes that the probability that EDF exposure is truly a health hazard is currently small. The weak epidemiological association and lack of any laboratory support for these associations provide only marginal scientific support that exposure to this agent is causing any degree of harm."

<http://www.niehs.nih.gov/emfrapid>

The agent the NIEH is talking about is the electromagnetic field present on all wiring in buildings that doesn't effect rodents, insects or humans. Global's pulse technology uses it as a pesticide to **safely** rid structures of rodents, roaches and many other insect pest.

GLOBAL INSTRUMENTS LDT has the nontoxic so-called pest repellent pesticide safe pulse technology for human beings and our indoor environmental answer for safe pest control, that has changed the daily lives and future of many American, Canadian, and Japanese consumers. Hopefully it will profoundly continue to shape the next century of all humanity!

CONCLUSION

GLOBALS EPC REPELLENT FACTOR

When this TEST began on June 12, 2000 AD, the one factor that was to be finally realized about Global Instruments EPC device is its repellent factor. The repellent factor holds the technological breakthrough missing for safe pest management used in structures for humans, and household pets that do not include pets in the rodent family.

As we go into the 21st century, a new inventive technology regarding pesticides defined by the United States Environmental Protection Agency (EPA) has affected the daily lives of American consumers for more than ten years. This new inventive technological breakthrough is profoundly shaping the future of structural (indoor) pest control in America as it will the entire planet in the future. As of June 8, 2000 according to the EPA, the Electronic Pest Control (EPC) device manufactured by Global Instruments Ltd. (GIL) is also a pesticide repellent as understood by H. Shytel Glover.

This so-called pesticide affects pest on a sensory and behavioral level because it effects the nervous system of rodents, roaches and many other insects without adverse effects to humans or our environment using electromagnetism present on all electrical wiring. To corroborate this fact, go to the National Institute of Environmental Health at: www.niehs.nih.gov/emfrapid and you will learn there is no reason to be concerned about adverse health effects to humans regarding electromagnetism regarding those by GIL.

Internationally, the state of the art of STRUCTURAL pest control is Integrated Pest Management (IPM). The purpose of IPM is to reduce the use of TOXIC PESTICIDES or as in Canada and other nations, completely discontinue the use of TOXIC PESTICIDES to humans. When TOXIC PESTICIDES are not used, IPM becomes HPM or Holistic Pest Management as in Canada and other nations. Pesticides as GIL's EPC device EPA numbers ESP.66464-IA-001 and ESP 62471-IA-001 are electromagnetic pesticides that disrupt the nervous system of pest, without the residual effects of toxic chemical pesticides being banned in America such as Dursban that's harmful to humans.

Global Instrument's Electronic Pest Control Devices as observed in this final test by me, H. Shytel Glover, does in fact repel both rodent and roaches as the daily count and graphs reflect. In fact, in some infestation cases, pests are gone within a 30 day clean up period as the record shows. However, over the years of testing and follow up I have witnessed longer periods to clean out pest. Not because this innovative pesticide doesn't

work as an IPM AID, but because of EXTREMELY INFESTED STRUCTURES whose pest count is immeasurable as in roach infestations.

The record also proves that Global's EPC Device not only rids a dwelling of rodents and roaches, but also substantially reduces the use of chemical pesticides or can completely eliminate their use in controlling rodents and roaches when used by IPM professionals. In these tests, I can say that NO TOXIC CHEMICAL PESTICIDE was used! Nor was I surprised to see that without the device, infestation was consistent with the count.

The record shows that 22 separate sites were divided into two groups. One group did not use GIL's EPC device. The pre-evaluation of these real life sites of one week proved from observations and counts, that infestation of rodents and roaches were present at separate sites. Fortunately there are no reports of the rodent that carries the hantavirus in Arizona from the United States Center of Disease Control, only field rodents. As for roaches in Arizona and those trapped on our glue/boards, there is the Turkish Flying Roach, the American Roach, the German Roach, The Palmetto, and Oriental Roach.

The test results clearly shows that if one were to follow GIL manufactured directions of their EPC device to the letter, one may receive the same result. If one has no infestation, the EPC serves as the first line of defense FOR PREVENTION because rodents and insect pest are repelled by this device due to its repellent factor; (meaning pest are made to feel that a structure is no longer the perfect place for them to set up nesting as the count reflect). Also the test insures that the quality of engineering is still consistent. As smart as rodents are, in sites that did not have the device, they seemed to have communicated once trapped to one another to avoid traps. This was not the case in the sites with the device where rodents were trapped. Trapping rodents with the device is easy! The device I judge to be approximately 93% effective due to the eradication speed of rodents and roaches. The traps I leave for the doubter to judge to for themselves using the same formula that gave 93% based on the daily count sheets.

One way of interpreting the data, is as follows:

Total captured during this test using Globals EPC Device;-Numbers of rodents captured in weeks 4,5, & 6. Total captured during test (homes with EPC Device).

$$\frac{112-8}{112} = 93\%$$

Now see "for yourself" by repeating the formula above for homes without the EPC Device, and then also apply to roach counts. Convince yourself of its merits. Or debunk it with this formula. But from where I see things, what this really means is what I want you to figure out using the formula. It means that:

After the third week of the test, in the households with the EPC devices, 93% of all the rodents and (you figure _____%) of roaches were captured compared to only 37% rodents and (you figure _____%) roaches for households using only glueboards.

Whether you do the math or not, I realize that the numbers caught during the test is not an absolute number, but for analytical purposes, it serves as a basis in which comparisons can be made. While this analysis could be extended into the next week and show a 100% clean up on rodents using the EPC device, and also show a higher clean up efficiency for the glue boards, it is my opinion that 100 % effectiveness on rodents is impractical for anyone to expect, although the data could support such a statement.

The only draw back to effective pest control is the consumer not following the EPC manufactures instructions, not GIL's EPC device. GIL's EPC device is a so-called new pesticide as H. Shytel Glover sees it that works like chemical pesticides without harmful effects to humanity. As a pesticide it is an aid to IPM that is extremely valuable because it not only takes the place of toxic chemical pesticides in the IPM process, but also helps prevent pest from nesting once they are gone. In fact, it is the only safe control THAT WORKS in the IPM process that doesn't require weekly, monthly, or annual replacements as do traps, baits sprays etc., thus savings to the environment and consumers!

The main conclusion that could be legitimately drawn from the results obtained during this test is that GIL's EPC device appears to have attacked the source of the problem where the glue boards attacked the symptoms. In the households using the EPC device, it is very clear that an increased activity period existed followed by drastic reductions with the pest problem. Whereas in the households without the EPC device the pests problem never really diminished and in fact remained almost constant. While the glue boards are away to make one feel better that they have done something to help with their problem, anyone with any knowledge of IPM realize that the source must be attacked in order to obtain the kind of results witnessed here.

It is my opinion, base upon the results displayed here, this EPC device as used in this test, can (and should) be an integral part of IPM in todays world locally throughout the United States of America and Internationally.

Respectfully submitted by,



H. Shytel Glover
CONSULTANT